



Nettlestone

★ Pre-School ★

ALL ABOUT US



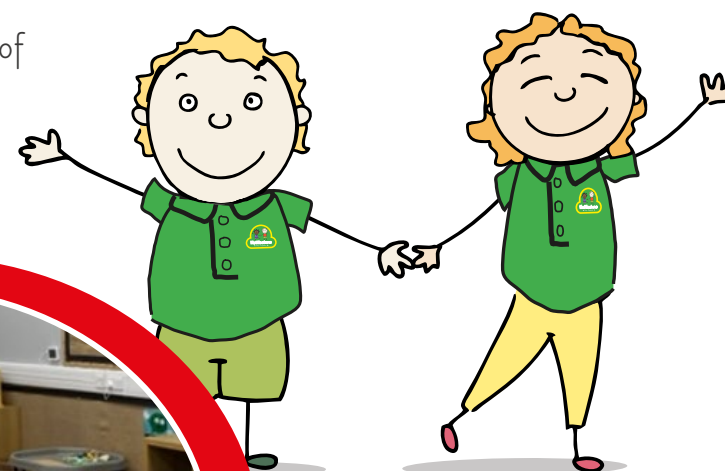
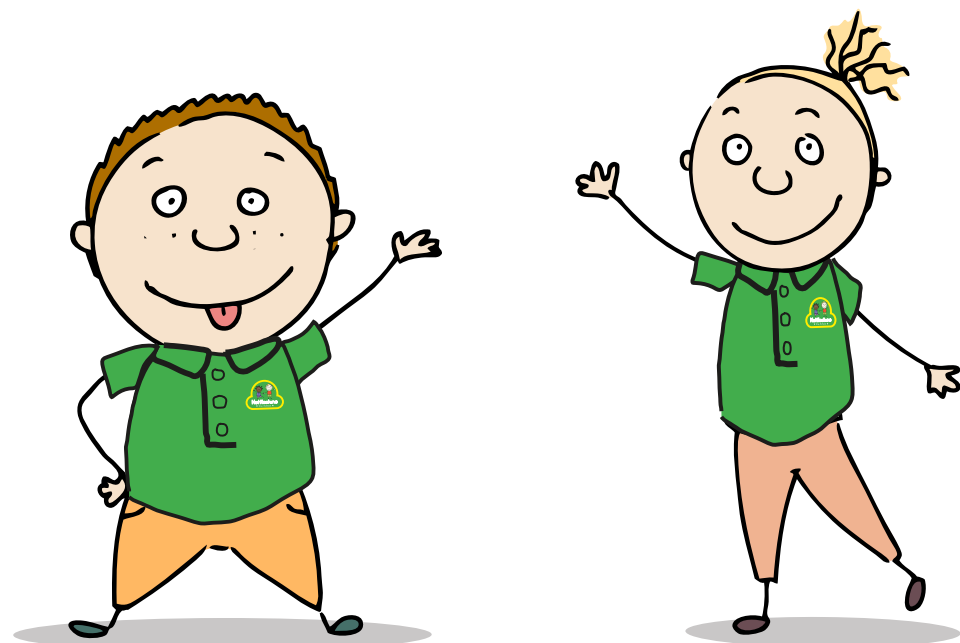
Will my child automatically join the school in Reception?

Sadly no. All school places have to be applied for via the Isle of Wight Council following the local authority admission policy.

Further information can be found following this link (School Admissions) www.iow.gov.uk/Council/OtherServices/School-Admissions/Starting-School-Primary-2021

We only have 30 places in our reception class so please be sure that your application reaches the local authority by the required deadline.

We will remind you of the deadline dates in our newsletter.



What do I do if my child is poorly and cannot attend Pre-School?

We will operate a first day response procedure which means if your child does not attend on their designated day a member of our team will give you a call to find out why. We ask that all sickness absence is supported with an email to parents@nettlestoneprimaryschool.co.uk.

We would prefer to be informed in advance if you have a planned absence in order that our safeguarding procedures are not alerted unnecessarily.

We also must inform parents that your child's place at pre-school may be at risk in the event of extended absence.



Welcome

Thank you for showing an interest in Nettlestone Pre-School and welcome to our Early Years Foundation Stage. The Pre-School is very much part of our school and is situated in our main building.

The Early Years staff team have created an exciting, playful learning environment for the children.

Our curriculum and learning areas are inclusive and support children of all abilities and ages to play and learn together. We want the children to be happy, independent and confident learners, who are keen to explore, be challenged, be curious, experiment, investigate and discover the world around them.

The children follow the national EYFS curriculum through a child-led approach. We focus learning on current topical events and the children's own interests to stimulate their creativity in learning and supporting them in meeting their early learning goals. The Pre-School operates during term time and provision is split into sessions. Akin to the main school, we offer visits and foster a love of learning outdoors.

If you have any further questions arising from your visit, please do not hesitate to phone the school on **01983 613171**.

In order to help us to make your child's transition from home to Pre-School as smooth as possible, we would be grateful if you would read the information contained in this brochure.

Thank you

How will my child be kept safe?

Keeping children safe relies on safe premises, safe people and safe policies and practices. There will always be a Designated Safeguarding Lead in the school with a high level of expertise in safeguarding and child protection. All staff are appropriately trained and recognise that keeping children safe is their primary responsibility. We have fully qualified first aiders across the school and the majority of the Early Years staff have received paediatric first aid training, with all staff on site trained in basic first aid.



How long will it take my child to settle at Pre-School?

Every child is different but all children are treated with the same personal care and attention to help them settle quickly. We may find that some children will settle straight away whilst others take a few days and some even longer. Settling at Pre-School can be more worrying for parents than children so we will aim to make your experience just as stress free by visiting you at home so that we can answer all your questions before you leave them with us at the start of their first session.



When planning and guiding activities practitioners will reflect upon the different ways that children learn and ensure they utilise this within their practice.

The Characteristics of Effective Learning are:

Playing and Exploring

- Supports children's engagement and investigation and experiencing things through being willing to 'have a go!'

Active Learning

- Supports children's motivation to learn by helping develop their concentration; ability and will to keep trying, when challenges occur; and celebration of completing a task.

Creating and Thinking Critically

- Supports children's thinking skills through developing ideas, making links between differing ideas, and creating strategies for completing a task.

The EYFS emphasises that parents are a child's primary educator and therefore encourages parents to contribute to all aspects of their child's learning.

Mathematics

We provide opportunities to develop and improve counting skills; understanding and using numbers; calculating simple addition and subtraction problems and to describe shapes, space and measures.

Understanding the World

We support children in making sense of the world around them and their community by providing opportunities to explore, observe and find out about people, places, technology and the environment.

Expressive Arts and Design


The children are encouraged to explore and play with a wide range of media and materials, as well as encouraging the sharing of thoughts, ideas and feelings through a variety of activities in art, music, movement, dance, role-play and design and technology.



Sessions

You are welcome to choose how you arrange your sessions, choosing a morning or afternoon session or an all day session.

Our pre-school class can take advantage of the opportunity to enjoy lunchtime in our main school hall. You can choose to provide a packed lunch for your child or purchase a school dinner for an additional cost (Please check cost with school office). These can be ordered and paid for, in advance, using SchoolMoney.

Monday	8:45 - 12:45pm	12:00pm In our school hall 	12:45 - 2:45pm
Tuesday	8:45 - 12:45pm		12:45 - 2:45pm
Wednesday	8:45 - 12:45pm		12:45 - 2:45pm
Thursday	8:45 - 12:45pm		12:45 - 2:45pm
Friday	8:45 - 12:45pm		12:45 - 2:45pm

Do you offer eligible children 30 hours of education?

Yes - The term after your child's third birthday you are entitled to 15 or 30 hours of early education funded by the Government. Parents must apply through the Government's Child Care Service via www.childcarechoices.gov.uk for the extended entitlement. We currently offer 30 places for children of the age of 3 and older per session.

Any sessions exceeding the universal funded 15 hours will be charged at £5.50 per 1 hour, should you not be entitled to the additional funded allocation.



What does learning look like at Pre-School?

Throughout the day teaching staff will facilitate learning by playing alongside the children. They will challenge and extend their ideas and promote 'next steps' towards their personal developmental milestones. They will capture their learning outcomes through personalised observation which will be shared with you via 'Seesaw' – our online learning journal. We would love to read your comments and feedback, as you comment on those 'WOW' moments.

Children are lucky to be able to learn at times with their peers in Reception Class and will experience 'continuous provision' which facilitates free-flow opportunities, so children will be able to choose where they want to be and what they want to do. We actively encourage use of our lovely outdoor space whatever the weather.



Physical Development

We provide opportunities for children to be active and to develop their coordination, control and movement both on a large and small scale. This includes a range of mark making activities and tools that will support the development of hand-eye coordination and fine motor skills. The children will be encouraged to start to become independent within their personal care, to include washing and drying hands and putting on their own coats.



Personal, Social and Emotional Development

Opportunities are provided for children to develop a strong, positive sense of themselves, and of others; form strong attachments and relationships and respect for others. Support to develop their social skills and learn how to manage their own feelings.

Literacy

In Early Years we promote the enjoyment of sharing a variety of books including stories, rhymes and jingles. We concentrate on developing the pre-reading and writing skills that children need before learning to read and write. This is closely linked to the Prime Areas of learning particularly Communication and Language and Physical Development. Children's writing develops through several stages before they are ready and able to form letters that are recognisable. We enjoy activities such as drama, role-play, puppets, masks and story sacks.

Purpose of the Early Years Foundation Stage



The Early Years Foundation Stage (EYFS) is a play-based curriculum for children from birth to five years, which allows children to explore and learn in an environment that is secure and safe, yet challenging. Play opportunities are non-stereotypical and available to all children promoting the teaching and learning from a skilled and well-trained workforce.

Research into early child development shows that children learn more rapidly during their first three years than in later life; whilst all areas of learning are important and inter-connected, the three **Prime Areas** are crucial for igniting children's curiosity and enthusiasm for learning, building their capacity to learn and form relationships and thrive. The **Specific Areas** will enable them to be self-motivated learners who are confident to succeed. It is our job to ensure that all children experience the awe and wonder of the world in which we live through the seven areas of learning.

Prime

- Communication and Language
- Physical Development
- Personal, Social and Emotional Development

Specific

- Literacy
- Mathematics
- Understanding the World
- Expressive Arts and Design

Communication and Language

Children will be provided with the opportunity to experience a language rich environment; develop confidence in expressing their wants, needs and feelings and being able to speak and listen in a variety of contexts.



What does a typical day at Pre-School look like for our 3/4 year olds?

Session 1	Children arrive: Parents say goodbye outside staff encourage children to hang up their bag and coat, engage in self-registration and select lunch option
	Wake Up Shake Up – Let's get ready for our day (physical activity)
	Children will access a variety of resources of their choice via our continuous provision . A variety of resources available provides exciting opportunities for learning and social interaction based around the children's own interests and passions both inside and outside. Independent access to healthy snack cafe/ drinks throughout the session.
	Tidy Up Time – children are encouraged to be responsible and help tidy up. This teaches the children to look after and care for their environment.
	Story time – we love reading! We share lots of different types of stories with opportunities for the children to join in, ask questions and predict what might happen next!
	Circle time – working in key groups to reflect on the question of the day.
	Health & Self Care – getting ready for lunch, washing hands, talking about healthy choices etc.
	Lunch and opportunity for play – all of our lunches are freshly cooked daily on site by our chef. Our dining experience promotes positive social interactions and independence whilst also encouraging children to make healthy choices.
	Children will access a variety of resources of their choice via our continuous provision . A variety of resources available provides exciting opportunities for learning and social interaction based around the children's own interests and passions both inside and outside. Independent access to healthy snack cafe/ drinks throughout the session
	Tidy Up Time – children are encouraged to be responsible and help tidy up. This teaches the children to look after and care for their environment.
Session 2	Circle Time – Balance bikes, Yoga, Dance, Football, Nature Walks and other fun activities to develop co-ordination control and movement.
	Story time – promotion of speaking & listening and self-confidence skills Preparation for home time
	Health & Self Care – getting ready for hometime, washing hands, talking about our day etc. At home time – children are always collected from the pre-school building.

Does my child have to wear a school uniform?

Yes – although we keep it simple! In the spirit of inclusivity we like our little learners to identify as part of our school, therefore we ask that they wear the light green polo shirt embroidered with the pre school logo. An optional hoodie is also available and is really practical for when we learn outside in all weathers! All items are available from Kids and Co in Ryde.

We love learning outside and therefore a warm waterproof coat is essential. As children play indoors and out, they need shoes less likely to result in a trip so no open toe sandals, sling backs or crocs please. We ask that a pair of wellington boots are left at pre-school for us to use daily. Velcro fastenings on shoes/trainers make it easier for your child to be independent when changing footwear too! We suggest that leggings, tracksuits or joggers are more practical for our style of learning, although shorts are also great in the warmer weather!

Please ensure all of your child's clothes are named – including any spare clothes you may want to send to school just in case your child does not quite get to the toilet in time.

How are snacks organised?

We operate a healthy snack café! This consists of a selection of fruit, vegetables and healthy food items that encourage the children to taste and experience different textures and flavours. We promote independence and encourage children to recognise when they are hungry and thirsty, and come to the snack café when they are ready. We ask for parent contributions to supplement our variety of daily snacks on offer. Children who stay for lunch are asked to support our healthy school ethos and be supportive of those children who may have allergies. To this end, nut products are strictly forbidden and sweets/ high sugar and heavily processed foods should be kept to a minimum.

What happens at lunchtime?

Parents often say that children eat better at our school than at home. We are delighted to offer our pre-school children the opportunity to become familiar with our dining experience. Those who opt to stay for lunch will join Reception Class to eat in the main Dining Hall. There is a cost per meal and there is always a vegetarian and vegan option. Should you prefer, children can bring a packed lunch to eat with their friends.



Contact

Executive Headteacher: Miss K Howarth BA (QTS),NPQH

Head of School: Mrs A Jacobs BA (Hons),PGCE,NPQH

Co-Chairs of Governors: Mr Ian Watterson & Mr M Day

SENCo: Mrs E Kelly (contact via school main email address)

DSL: Miss K Howarth, Mrs A Jacobs, Mrs C Martin, Mrs E Kelly

School Administrator: Mrs Ayling

Nettlestone Primary School, Seaview. Isle of Wight. UK. PO34 5DY

Telephone: (01983) 613171

Email: admin@nettlestoneprimaryschool.co.uk

www.nettlestoneprimaryschool.co.uk

